

The Ice Ages

GUIDING QUESTION *How did people adapt to survive during the ice ages?*

Tools and fire were two important technological developments of Paleolithic people. Throughout history, people have used new technology to help them survive when the environment changes. The ice ages were major environmental disturbances. The changes they brought about threatened the very survival of humans.

What Changes Came With the Ice Ages?

The **ice ages** were long periods of extreme cold that affected all of Earth. The most recent Ice Age began about 100,000 years ago. Thick sheets of ice moved across large parts of Europe, Asia, and North America. As the ice sheets, or glaciers, grew larger, the water level of the oceans was lowered. The low sea

GEOGRAPHY CONNECTION

During the most recent Ice Age, a strip of land connected the continents of Asia and North America.

- 1 REGIONS** How did the geography of this region change when the most recent Ice Age ended?
- 2 CRITICAL THINKING**
Analyzing After people arrived in North America, what is a likely reason they moved south rather than staying near the land bridge?



Reading HELPDESK



ice age a time when glaciers covered much of the land

levels exposed a strip of dry land connecting the continents of Asia and North America. This strip of land was known as a land bridge. The land bridge acted as a natural highway that allowed people to travel from Asia into North America. From there, Paleolithic peoples moved southward to settle in different regions.

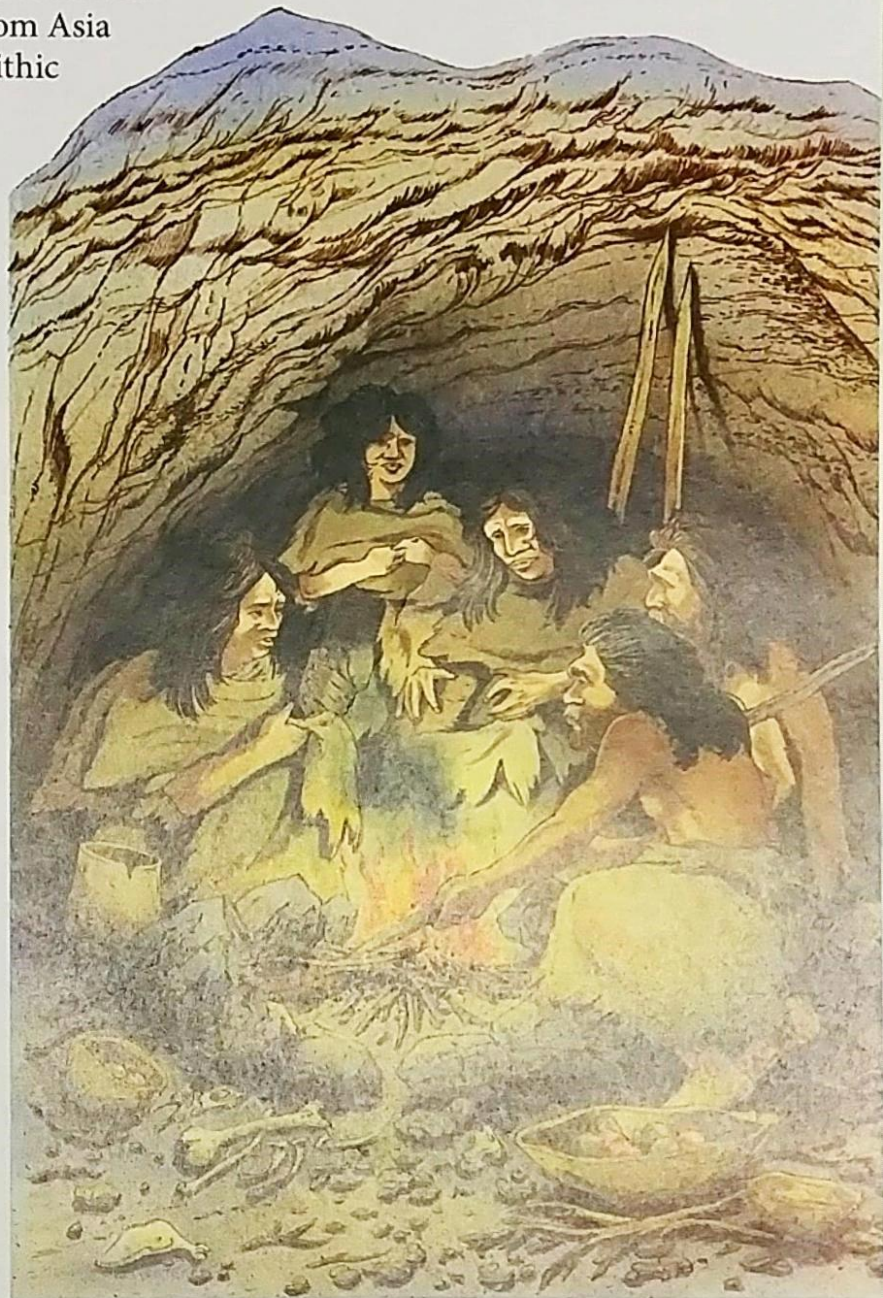
How Did the Ice Ages Affect Humans?

Ice age conditions posed a grave threat to human life. To survive in the cold temperatures, humans had to adapt, or change, many areas of their lives. One way they adapted their diets was by enriching meals with fat. To protect themselves from the harsh environment, they learned to build sturdier shelters. They also learned to make warm clothing using animal furs. Paleolithic people used fire to help them stay warm in this icy environment. The last Ice Age lasted about 90,000 years, ending between about 9000 and 8000 B.C.

PROGRESS CHECK

Explaining How were land bridges formed?

After early people controlled fire, they brought it into their shelters. At the site of some Stone Age huts, scientists have discovered an early form of a fireplace—a shallow hole lined with blackened stones.



LESSON 1 REVIEW



Review Vocabulary

1. What is another name for the *Paleolithic Age*?

Answer the Guiding Questions

2. **Describing** By what methods did Paleolithic people get food?
3. **Summarizing** How did fire help Paleolithic people survive?

4. **Determining Cause and Effect** How did the ice ages affect where people settled in the Americas?
5. **Making Connections** How does climate affect the type of house you live in or the clothes you wear?
6. **NARRATIVE** You are a mother or father who lives in the early Paleolithic Age. In a few paragraphs, describe your daily life.